

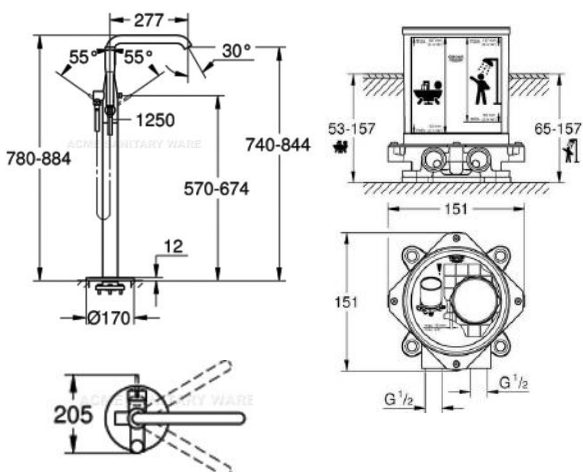





PROJECT		REF		REV	ITEM CODE	
LOCATION		DATE			PAGE	

SANITARY WARE SPECIFICATION SHEET

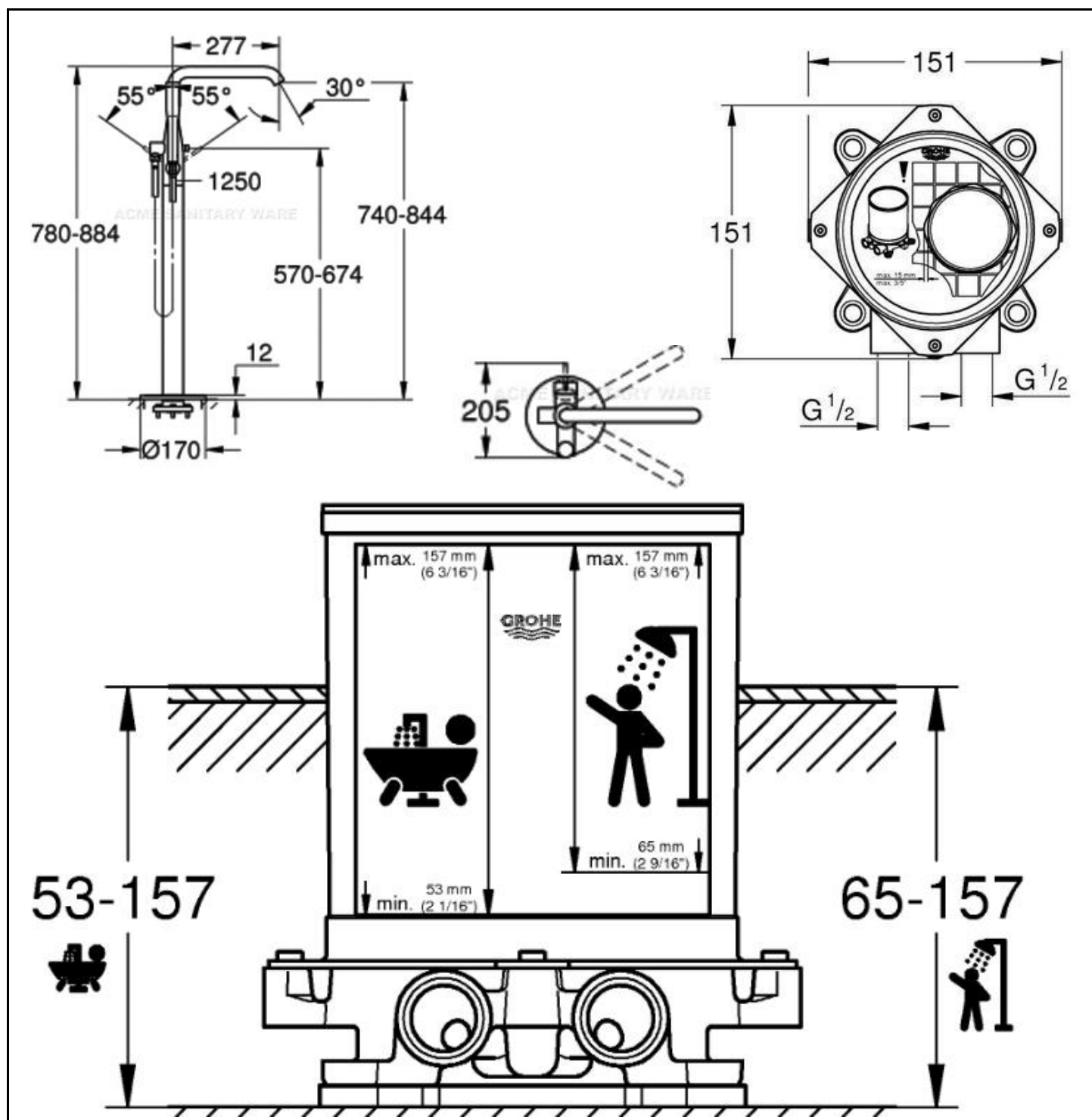
Item Descriptions	GROHE (Germany) "Essence" Single-lever brushed hard graphite free stand bath mixer with single functions hand spray ; nominated flow rate 6.3 L/min in WELS Grade 1; Registration No. SB 18-0030		Illustration/ Drawing													
Dimensions	L170 x W277 x H884 mm															
Model	23491AL1 (Mixer) 45984001 (Mounting box)															
Finish	Brushed Hard Graphite															
Manufacturer	GROHE Limited															
Supplier	Acme Sanitary Ware Co. Ltd Mr. Eric Wong/ Mr. Don Yuen															
Contact Tel/Fax	(852) 2388-7171 / (852) 2710-8012															
E-mail	acme@acmesanitary.com.hk															
Website	www.acmesanitary.com.hk															
Essence Single-lever bath mixer 1/2", floor mounted set for final installation for 45 984 without roughing-in-set GROHE SilkMove 35 mm ceramic cartridge with temperature limiter GROHE StarLight finish automatic diverter: bath/shower swivel spout with mousseur and stop limiter projection 277 mm integrated non-return valve in the shower outlet 1/2" with shower holder hand shower Euphoria Cosmopolitan Stick (27 806 000) 7.6 l/min. Silverflex shower hose 1250 mm 1/2" x 1/2" (28 362) protected against backflow min. recommended pressure 1.0 bar • 1 Spray: Normal • Metal • GROHE EcoJoy 1.75 gpm (6.6 l/min) flow limiter • GROHE DreamSpray perfect spray pattern • GROHE StarLight chrome finish • SpeedClean anti-lime system • Inner WaterGuide for a longer life • Universal mounting system (fits all standard shower hoses) • Suitable for instantaneous heater	for floor-mounted bath mixers/spouts and shower mixers without finishing trim set installation plate with 360° horizontal and 3° vertical adjustment installation depth 53-157 mm for bath mixers/spouts, depth compensation 104 mm installation depth 65-157 mm for shower mixers, depth compensation 92 mm two 1/2" female connections (hot/cold supplies) flushing plug Can take a single mixed supply GROHE Fresh retrofit set: enables access to concealed cistern to add a cleaning tablet (chlorine free tablets only)		<table><tr><td>Dynamic flow pressure (kPa)</td><td>50</td><td>150</td><td>250</td><td>350</td><td>500</td></tr><tr><td>Flow rate (l / min)</td><td>4.35</td><td>6.35</td><td>6.23</td><td>6.45</td><td>6.80</td></tr></table> 		Dynamic flow pressure (kPa)	50	150	250	350	500	Flow rate (l / min)	4.35	6.35	6.23	6.45	6.80
Dynamic flow pressure (kPa)	50	150	250	350	500											
Flow rate (l / min)	4.35	6.35	6.23	6.45	6.80											
			Colour options: <table><tr><td>001 StarLight Chrome</td><td>GL1 Cool Sunrise</td></tr><tr><td>DC1 SuperSteel</td><td>GN1 Brushed Cool Sunrise</td></tr><tr><td>DA1 Warm Sunset</td><td>DL1 Brushed Warm Sunset</td></tr><tr><td>A01 Hard Graphite</td><td>BE1 Polished Nickel</td></tr><tr><td>AL1 Brushed Hard Graphite</td><td>EN1 Brushed Nickel</td></tr></table>		001 StarLight Chrome	GL1 Cool Sunrise	DC1 SuperSteel	GN1 Brushed Cool Sunrise	DA1 Warm Sunset	DL1 Brushed Warm Sunset	A01 Hard Graphite	BE1 Polished Nickel	AL1 Brushed Hard Graphite	EN1 Brushed Nickel		
001 StarLight Chrome	GL1 Cool Sunrise															
DC1 SuperSteel	GN1 Brushed Cool Sunrise															
DA1 Warm Sunset	DL1 Brushed Warm Sunset															
A01 Hard Graphite	BE1 Polished Nickel															
AL1 Brushed Hard Graphite	EN1 Brushed Nickel															

* All information of the above is for the reference only. No prior notice is made if any changes.



PROJECT		REF		REV	ITEM CODE	
LOCATION		DATE			PAGE	

SANITARY WARE SPECIFICATION SHEET



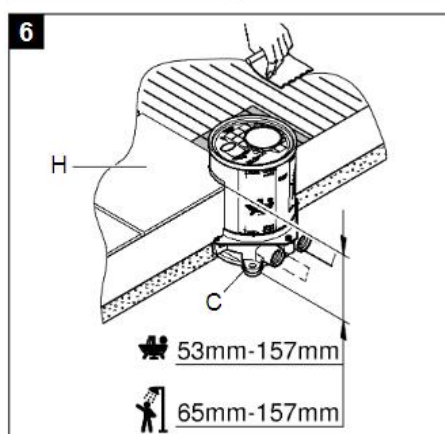
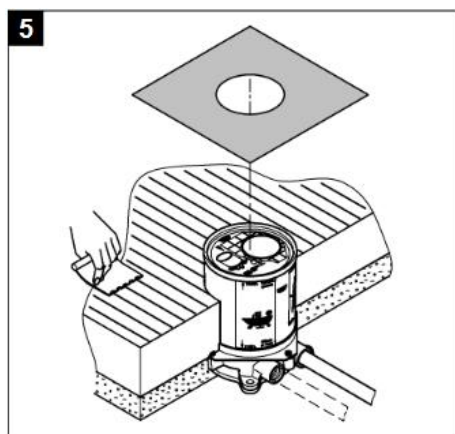
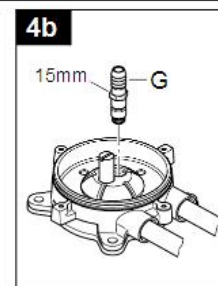
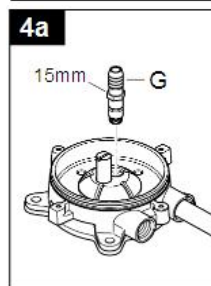
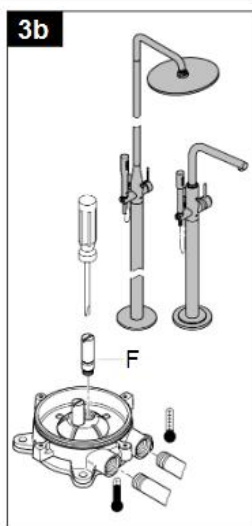
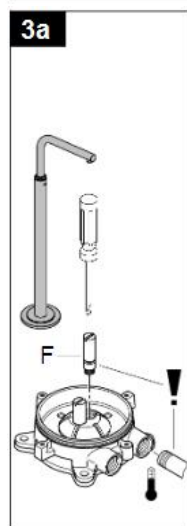
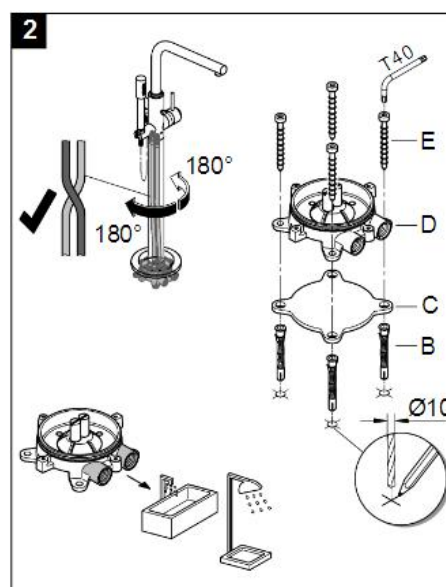
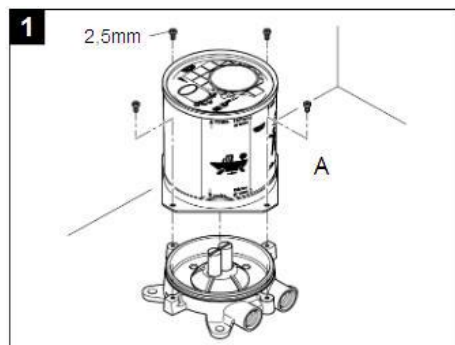
Note:

* All information of the above is for the reference only. No prior notice is made if any changes.



PROJECT		REF		REV	ITEM CODE	
LOCATION		DATE			PAGE	

SANITARY WARE SPECIFICATION SHEET



Note:

* All information of the above is for the reference only. No prior notice is made if any changes.

註冊號碼 (Registration No.): SB 18-0030




自願參與用水效益標籤計劃 - 沐浴花灑
Voluntary Water Efficiency Labelling Scheme - Showers for Bathing



將下列花灑在本計劃內註冊：
has registered the following shower under this scheme :

牌 子 / Brand	:	GROHE
型 號 / Model	:	26465XXX
原產地 / Country or Region Origin	:	Germany

在用水效益標籤上展示的標誌 <i>Symbolic Presentation on the Water Efficiency Label</i>	:	 滴水點 <i>Water droplet(s)</i>
用水效益級別 <i>Water Efficiency Grade</i>	:	1
耗水量 <i>Water Consumption</i>	:	6.3 公升/分鐘 <i>litres/minute</i>

簽發日期:
Date of Issue: 14 February 2018



水 務 署
Water Supplies Department



水務署署長(周世威代行)
for Director of Water Supplies